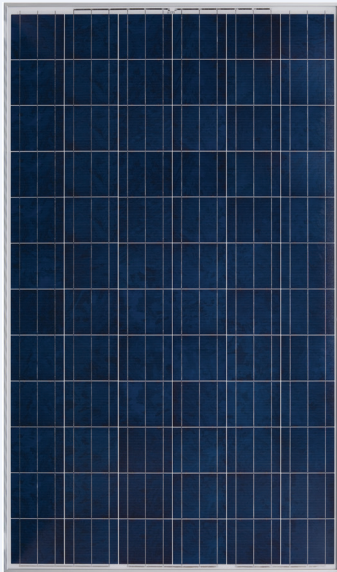


# YGE 72 CELL SERIES 2

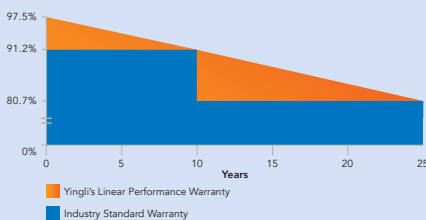


**17.7%**  
CELL EFFICIENCY

**10 YEAR**  
PRODUCT WARRANTY

**0 - 5 W**  
POWER TOLERANCE

### Warranty Information



## PROVEN QUALITY IN A NEW DIMENSION

*Independently tested with proven quality and long term reliability. Millions of PV systems installed worldwide underline Yingli's industry leadership.*



#### Durability

Durable PV modules, independently tested for harsh environmental conditions such as exposure to salt mist, ammonia, or known PID risk factors.



#### Advanced Glass

A special glass with high transmission and a unique anti-reflective coating results in more sunlight on the solar cells and a higher energy yield.



#### Extended Size

This larger version facilitates cost savings at a system level e.g. for handling and installation, with the reassurance of proven Yingli Solar quality.



#### PID Resistant

Tested in accordance to the draft standard IEC 62804, our PV modules have demonstrated resistance against PID (Potential Induced Degradation), which translates to security for your investment.

### Yingli Green Energy

Yingli Green Energy Holding Company Limited (NYSE: YGE), known as "Yingli Solar," is the world's largest photovoltaic module manufacturer in terms of production capacity. We are a leading solar energy company built upon proven product reliability and sustainable performance.

# YGE 72 CELL SERIES 2

## ELECTRICAL PERFORMANCE

Electrical parameters at Standard Test Conditions (STC)

Module type	YLxxxP-35b (xxx=P <sub>max</sub> )						
	P <sub>max</sub>	W	310	305	300	295	290
Power output	P <sub>max</sub>	W	310	305	300	295	290
Power output tolerances	ΔP <sub>max</sub>	W	0 / +5				
Module efficiency	η <sub>m</sub>	%	16.0	15.7	15.5	15.2	14.9
Voltage at P <sub>max</sub>	V <sub>mpp</sub>	V	36.3	36.1	35.8	35.6	35.3
Current at P <sub>max</sub>	I <sub>mpp</sub>	A	8.53	8.45	8.37	8.29	8.22
Open-circuit voltage	V <sub>oc</sub>	V	45.6	45.4	45.2	45.0	44.8
Short-circuit current	I <sub>sc</sub>	A	8.99	8.93	8.86	8.79	8.73

STC: 1000W/m<sup>2</sup> irradiance, 25°C module temperature, AM1.5g spectrum according to EN 60904-3.  
Average relative efficiency reduction of 3.3% at 200W/m<sup>2</sup> according to EN 60904-1.

Electrical parameters at Nominal Operating Cell Temperature (NOCT)

Power output	YLxxxP-35b (xxx=P <sub>max</sub> )						
	P <sub>max</sub>	W	226.1	222.5	218.8	215.2	211.5
Power output	P <sub>max</sub>	W	226.1	222.5	218.8	215.2	211.5
Voltage at P <sub>max</sub>	V <sub>mpp</sub>	V	33.1	32.9	32.7	32.4	32.2
Current at P <sub>max</sub>	I <sub>mpp</sub>	A	6.82	6.76	6.70	6.63	6.58
Open-circuit voltage	V <sub>oc</sub>	V	42.1	41.9	41.7	41.6	41.4
Short-circuit current	I <sub>sc</sub>	A	7.27	7.22	7.16	7.11	7.06

NOCT: open-circuit module operation temperature at 800W/m<sup>2</sup> irradiance, 20°C ambient temperature, 1m/s wind speed.

## THERMAL CHARACTERISTICS

Nominal operating cell temperature	NOCT	°C	46 +/- 2
Temperature coefficient of P <sub>max</sub>	γ	%/°C	-0.42
Temperature coefficient of V <sub>oc</sub>	β <sub>Voc</sub>	%/°C	-0.32
Temperature coefficient of I <sub>sc</sub>	α <sub>Isc</sub>	%/°C	0.05
Temperature coefficient of V <sub>mpp</sub>	β <sub>Vmpp</sub>	%/°C	-0.42

## OPERATING CONDITIONS

Max. system voltage	1000V <sub>DC</sub>
Max. series fuse rating	15A
Limiting reverse current	15A
Operating temperature range	-40°C to 85°C
Max. static load, front (e.g., snow)	5400Pa
Max. static load, back (e.g., wind)	2400Pa
Max. hailstone impact (diameter / velocity)	25mm / 23m/s

## CONSTRUCTION MATERIALS

Front cover (material / thickness)	low-iron tempered glass / 4.0mm
Cell (quantity / material / dimensions / number of busbars)	72 / multicrystalline silicon / 156mm x 156mm / 2 or 3
Frame (material / color / anodization color / edge sealing)	anodized aluminum alloy / silver / clear / silicone or tape
Junction box (protection degree)	≥ IP65
Cable (length / cross-sectional area)	1100mm / 4mm <sup>2</sup>
Plug connector (type / protection degree)	MC4 / IP67 or YT08-1 / IP67 or Amphenol H4 / IP68

- Due to continuous innovation, research and product improvement, the specifications in this product information sheet are subject to change without prior notice. The specifications may deviate slightly and are not guaranteed.
- The data do not refer to a single module and they are not part of the offer, they only serve for comparison to different module types.

## QUALIFICATIONS & CERTIFICATES

IEC 61215, IEC 61730, CE, MCS, ISO 9001:2008, ISO 14001:2004, BS OHSAS 18001:2007, PV Cycle, SA 8000



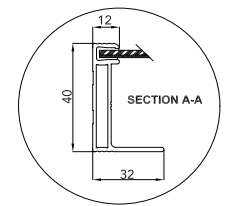
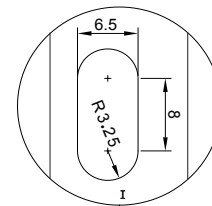
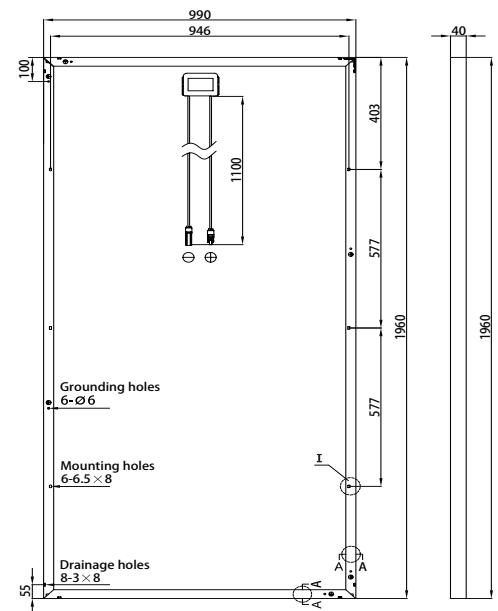
## GENERAL CHARACTERISTICS

Dimensions (L / W / H)	1960mm / 990mm / 40mm
Weight	25.5kg

## PACKAGING SPECIFICATIONS

Number of modules per pallet	26
Number of pallets per 40' container	24
Packaging box dimensions (L / W / H)	1995mm / 1145mm / 1170mm
Box weight	707kg

Unit: mm



Warning: Read the Installation and User Manual in its entirety before handling, installing, and operating Yingli Solar modules.

Our Partners:

Yingli Green Energy Holding Co. Ltd.

service@yingli.com

Tel: 0086-312-2188055

YINGLISOLAR.COM

